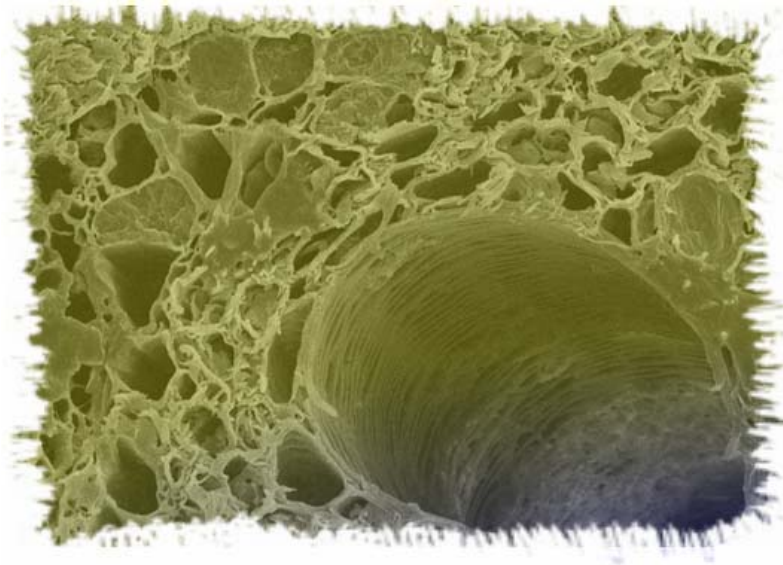


Journal of Applied Engineering Science & Technology, JAEST



Influence of the cyclic loading of very large number of cycles on the pile capacity

H. Bekki, B. Tali, J. Canou, J.C. Dupla, A. Bouafia

Formulation of a composite of date palm wood-cement

F. Touloum, A. Younsi, A. Kaci, A. Benchabane

Stability of geosynthetic reinforced embankments over stone column-improved soft soil

M. Labeled, M. Mellas

Multiple solutions for flow mode-transition in an inclined cavity generated by natural convection

M. Zellouf, N. Moummi, A. Labeled, K. Aoues

FVM model and virtual instrument based system for electromagnetic characterization of steel material

I.N. El Ghoul, A. Cheriet, S. Bensaid, A.E Lakhdar

The effective length estimation of columns in semi-rigid jointed braced frames

I. Meghezzi-Larafi, A. Tati

Experimental and numerical analyses of a thin cylindrical shell model

O. Temami, D. Hamadi, A. Zatar, A. Ayoub

Analyses of a composite functionally graded material beam with a new transverse shear deformation function

H. Guenfoud, H. Ziou, M. Himeur, M. Guenfoud
